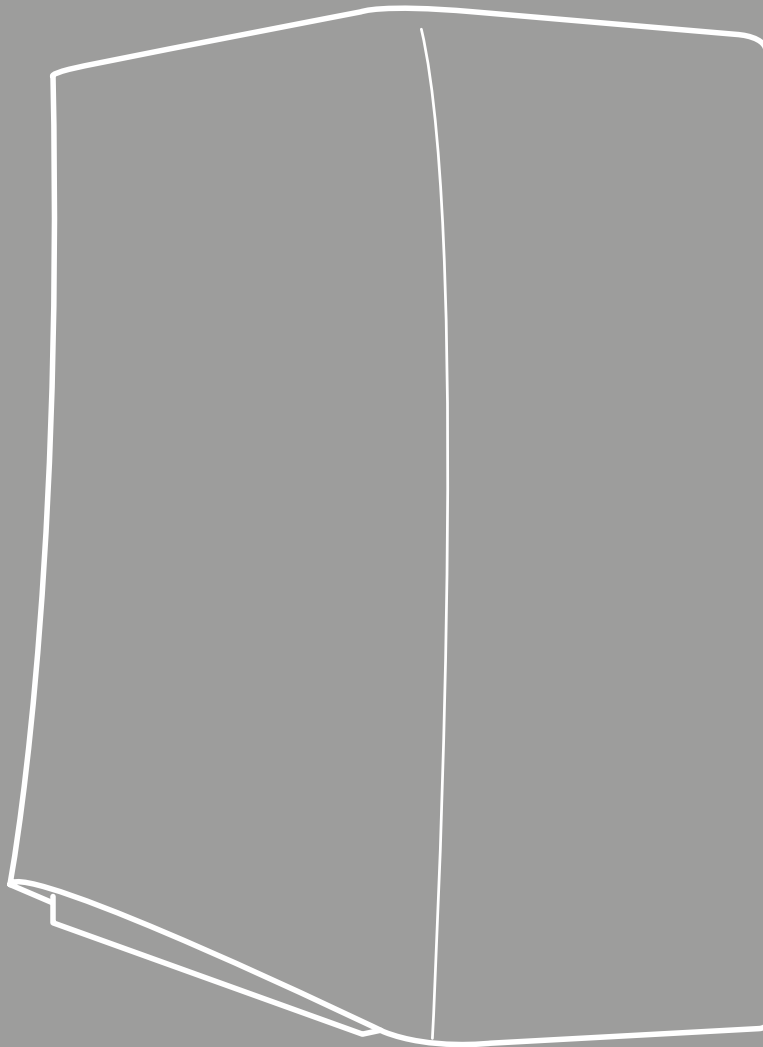




Dryflow

Dryflow Viper

user manual



Features:

1. It is equipped with an automatic infrared ray induction system, which means you do not have to touch the unit at any time, so this effectively avoids pathogen cross infection and re-contamination.
2. It has outstanding performance with advanced technology and infrared sensor.
3. It has a high speed motor with RPM of 24,000.
4. This product comes with over current protection.
5. It is suitable for schools, factories, office buildings, hotels and similar locations.

Technical parameters:

Rated Voltage	AC220-240V	Waterproof Grade	IPX1
Rated Frequency	50/60Hz	Air Speed	90m/s
Rated Power	2000W	Sensing Distance	12 +/- 3 cm
Ambient Temperature	0-40°C	Drying Time	10 - 15 sec.
Installation	Wall Mounting	Overall Size	325*310*188mm

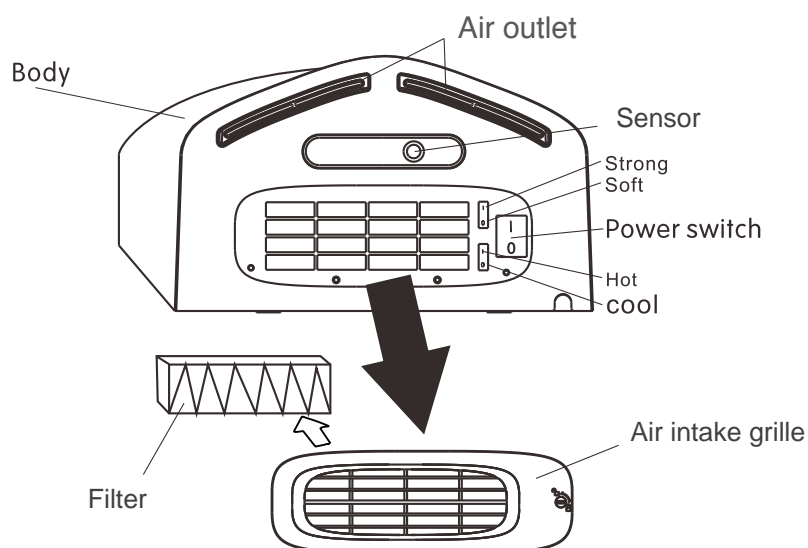
Note before installation:

Warning

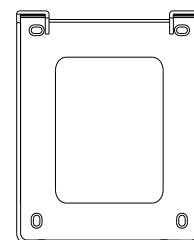
1. Do not install in the following places as this may cause the unit to malfunction and cause accidents:
 - In areas with temperatures below 10°C or above 40°C.
 - Where the unit is likely to be splashed by water or can get excessively wet.
 - In direct sunlight.
 - In an area where there is condensation.
 - In an area close to chemicals or gases.
 - In altitude over the range of 0-2000m.
2. You must cut off the power before installation and maintenance.
3. Do not dismantle, repair or make alterations to this machine without authorisation, otherwise there is a risk of electric shock, fire and other accidents.
4. The machine must have an earth connection.
5. If the power is over +/-10% the unit will malfunction. Using an incorrect power supply will invalidate the guarantee.

Attention

1. Do not install above stainless steel or other locations with reflective surfaces, otherwise the unit will be prone to self-operating.
2. The unit should be firmly fixed to a smooth, completely flat wall.
3. A minimum distance of 100mm should be left clear either side of the unit.
4. Avoid locations where people or doors might damage the unit.
5. This appliance is not intended for use by persons (including children) with reduced physical, sensory or mental capabilities, unless they are supervised and instructed how to use the appliance by the person responsible for their safety. Children should be supervised to ensure that they do not play with the appliance.

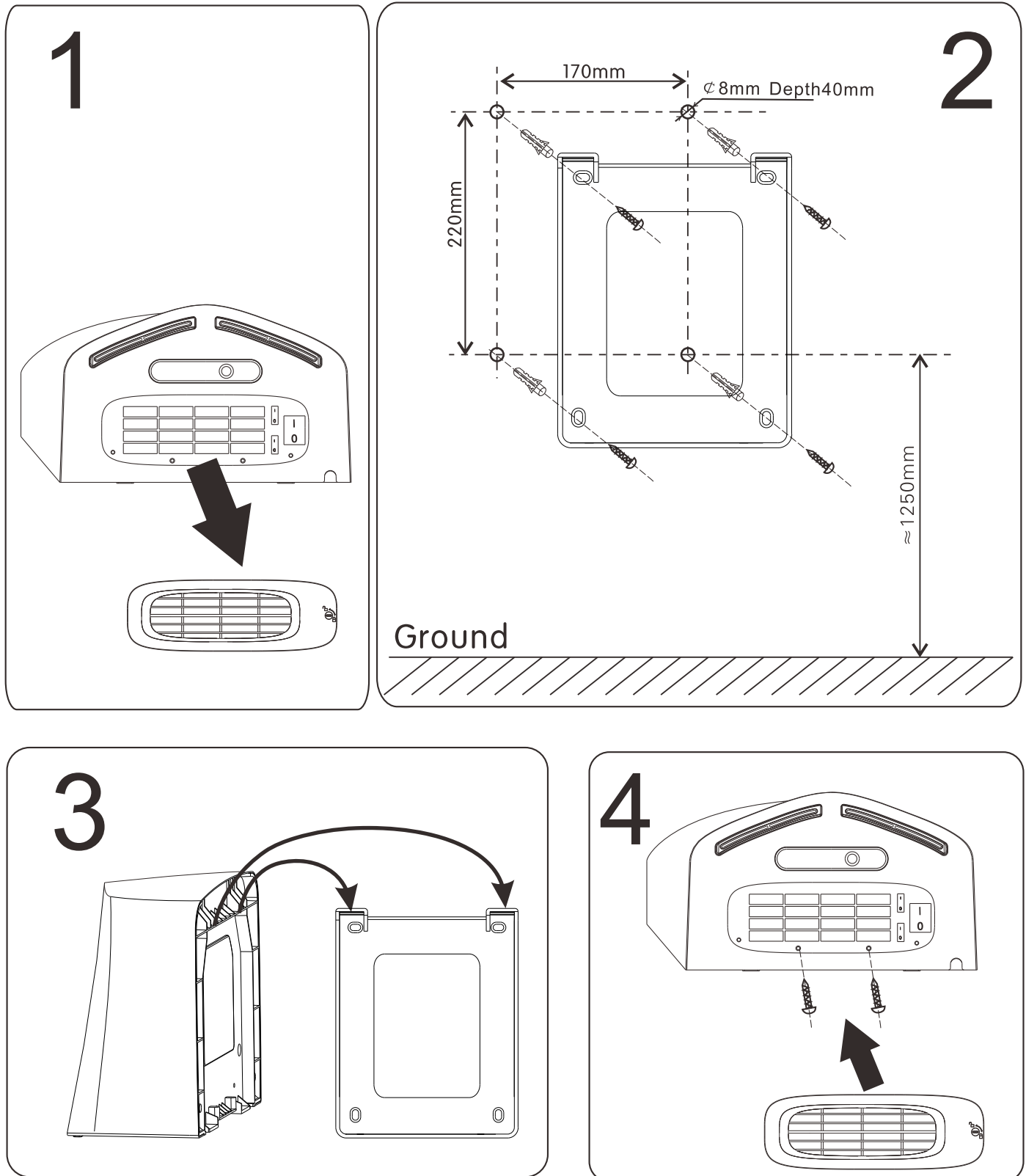


Components:



Mounting plate

Method of Installation:



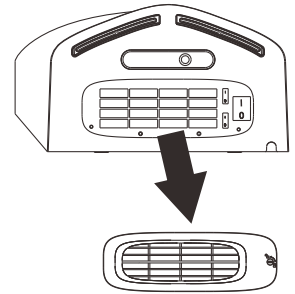
Cleaning of Filter:



Attention: If the air flow becomes weak, please clean the filter. Do not use water.

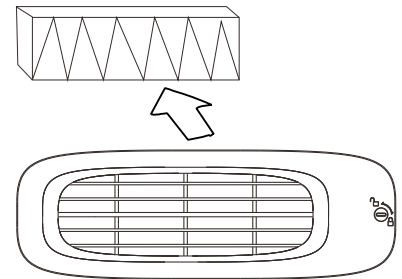
1

Unlock the filter grille and use the ridge in the middle of the filter grille to pull and remove.



2

Get the filter from the filter grille.

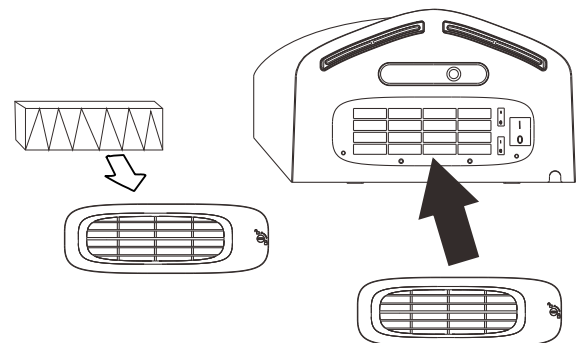


3

Clean the dust on the filter, do not wash. If there is too much dust, please replace the filter.

4

Put the filter at the right position in the filter grille, and insert the filter grille back onto the unit, making sure to turn the lock to secure in place. The air filter must be installed when operating the unit.



Maintenance:

1. Please cut off the power and clean the cover with neutral detergent using a clean soft dry cloth when it is dirty. Do not use solvents, acid or alkaline cleaners or hard brushes as these can damage the machine surface or cause it to discolour;
2. When cleaning the cover prevent water droplets getting into the machine to avoid electric shock or short circuit;
3. If the power cord is damaged, it must be replaced by the manufacturer, its service agents or similar qualified person;
4. If the machine breaks down, cut off the power; please commission a professional to repair it.

Terms of Guarantee:

1. The product guarantee period is 3 years.
2. The guarantee period came into effect from the date of buying the machine.
3. The following are not covered by the guarantee:
 - ◆ Improper use and fault caused by demolition, alteration and repair by persons not technically qualified.
 - ◆ Fires, earthquakes, thunder and other natural disasters causing faults and abnormal voltage.
 - ◆ Faults caused by non matching power.
 - ◆ Faults caused by excessive use in non optimal operating conditions.