

# Intelligent

**The trusted independent experts for hand dryers  
and washrooms since 2012.**



## Be-Line® WC pack with backrest

Ref. 511809MC

DOC M pack



### DESCRIPTION

Be-Line® WC pack with backrest - Ref. 511809MC

DOC M Be-Line® WC pack with 1 backrest, depth 150mm.

1 drop-down support rail, length 850mm.

4 grab bars, length 600mm.

Aluminium tube.

Metallised anthracite powder-coated finish (LRV 14) provides a good visual contrast with the wall.

Tested to over 200kg.

Maximum recommended user weight 135kg.

10-year warranty.

CE marked.

DOC M compliant.

### ADVANTAGES



Innovative design for all



Comfort: ergonomic anti-rotation surface



Maximum safety: tested to over 200kg

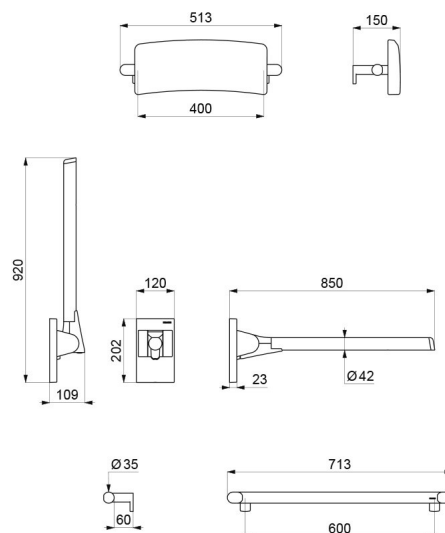


Complies with DOC M

### TECHNICAL CHARACTERISTICS

Be-Line® WC pack with backrest - Ref. 511809MC

Depth	Backrest: 150mm
Length	Grab bars: 600mm; Drop-down support rail: 850mm
Finish	Metallised anthracite powder-coated aluminium
Norms	CE
Warranty	10



## Be-Line® WC pack with backrest

Ref. 511809MW

DOC M pack



### DESCRIPTION

Be-Line® WC pack with backrest - Ref. 511809MW

DOC M Be-Line® WC pack with 1 backrest, depth 150mm.

1 drop-down support rail, length 850mm.

4 grab bars, length 600mm.

Aluminium tube.

Matte white powder-coated finish (LRV 82) provides a good visual contrast with the wall.

Tested to over 200kg.

Maximum recommended user weight 135kg.

10-year warranty.

CE marked.

DOC M compliant.

### ADVANTAGES



Innovative design for all



Comfort: ergonomic anti-rotation surface




Maximum safety: tested to over 200kg

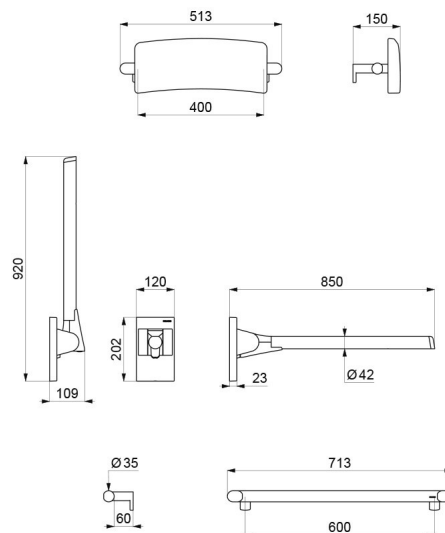


Complies with DOC M

### TECHNICAL CHARACTERISTICS

Be-Line® WC pack with backrest - Ref. 511809MW

Depth	Backrest: 150mm
Length	Grab bars: 600mm; Drop-down support rail: 850mm
Finish	Matte white powder-coated aluminium
Norms	CE
Warranty	



## Be-Line® DOC M grab bar anthracite, 600mm

Ref. 511906MC

Metallised anthracite powder-coated aluminium



### DESCRIPTION

Be-Line® DOC M grab bar anthracite, 600mm - Ref. 511906MC

Be-Line® DOC M grab bar Ø 35mm, for people with reduced mobility.  
For use as a handrail or grab bar for WCs, showers or baths.  
Aluminium tube, 3mm thick. Solid aluminium fixing points.  
Rounded profile Ø 35mm with ergonomic flat front face that prevents rotation for an optimal grip.  
Metallised anthracite powder-coated aluminium provides a good visual contrast with the wall.  
Uniform surface is easy to clean and maintain.  
60mm gap between the bar and the wall: minimal space prevents the forearm passing between the bar and the wall, reducing the risk of fracture in case of loss of balance.  
Concealed fixings.  
Supplied with stainless steel screws Ø 8 x 70mm for concrete walls.  
600mm centre-to-centre.  
Tested to over 200kg. Maximum recommended user weight: 135kg.  
10-year warranty. CE marked.  
DOC M compliant.

### TECHNICAL CHARACTERISTICS

Be-Line® DOC M grab bar anthracite, 600mm - Ref. 511906MC

Length	600mm
Diameter	Ø 35mm
Width to the wall	60mm
Finish	Metallised anthracite powder-coated aluminium
Warranty	

### ADVANTAGES



Innovative design for all



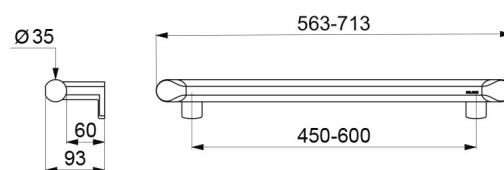
Comfort: ergonomic anti-rotation surface



Tested to over 200kg



DOC M compliant



# Be-Line® DOC M grab bar matte white, 600mm

Ref. 511906MW

Matte white powder-coated aluminium




## DESCRIPTION

**Be-Line® DOC M grab bar matte white, 600mm - Ref. 511906MW**

Be-Line® DOC M grab bar Ø 35mm, for people with reduced mobility.  
For use as a handrail or grab bar for WCs, showers or baths.  
Aluminium tube, 3mm thick. Solid aluminium fixing points.  
Rounded profile Ø 35mm with ergonomic flat front face that prevents rotation for an optimal grip.  
Matte white powder-coated aluminium provides a good visual contrast with the wall.  
Uniform surface is easy to clean and maintain.  
60mm gap between the bar and the wall: minimal space prevents the forearm passing between the bar and the wall, reducing the risk of fracture in case of loss of balance.  
Concealed fixings.  
Supplied with stainless steel screws Ø 8 x 70mm for concrete walls.  
600mm centre-to-centre.  
Tested to over 200kg. Maximum recommended user weight: 135kg.  
10-year warranty. CE marked.  
DOC M compliant.

## TECHNICAL CHARACTERISTICS

**Be-Line® DOC M grab bar matte white, 600mm - Ref. 511906MW**

Length	600mm
Diameter	Ø 35mm
Width to the wall	60mm
Thickness	3mm
Finish	Matte white powder-coated aluminium
Warranty	

## ADVANTAGES



Innovative design for all



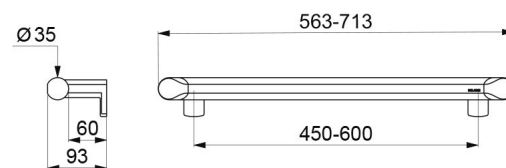
Comfort: ergonomic anti-rotation surface



Tested to over 200kg



DOC M compliant



# Be-Line drop-down support rail, L. 850mm, anthracite

Ref. 511964C

Powder-coated metallised anthracite






## DESCRIPTION

**Be-Line drop-down support rail, L. 850mm, anthracite - Ref. 511964C**

Be-Line® drop-down support rail for people with reduced mobility. In the lowered position use as a grab bar, as a support for standing and for assisting movement, for WCs or showers. Allows side access in the raised position. Removable: easy to remove with anti-theft locking system. Reduces the number of grab bars in a facility, allowing installation only when required. Example: hotels or hospitals providing short-term accommodation for disabled people. Drop-down rail with slowed down descent. Retained in upright position. Aluminium tube. Rounded profile Ø 42mm with ergonomic flat front face that prevents rotation for an optimal grip. Metallised anthracite powder-coated aluminium finish provides a good visual contrast with light-coloured walls. Uniform surface for easy maintenance and hygiene. Concealed fixings secured to wall by a 304 stainless steel plate, 5mm thick. Supplied with stainless steel screws Ø 8 x 70mm for concrete walls. Dimensions: 850 x 210 x 120mm. Tested to over 200kg. Maximum recommended user weight: 135kg. Support rail for WCs with 10-year warranty. CE marked.

## TECHNICAL CHARACTERISTICS

**Be-Line drop-down support rail, L. 850mm, anthracite - Ref. 511964C**

Height	210mm, 920mm when raised
Length	850mm
Width	120mm
Diameter	Ø 42mm
Finish	Powder-coated metallised anthracite aluminium
Norms	 
Warranty	

## ADVANTAGES



Innovative design suitable for all users



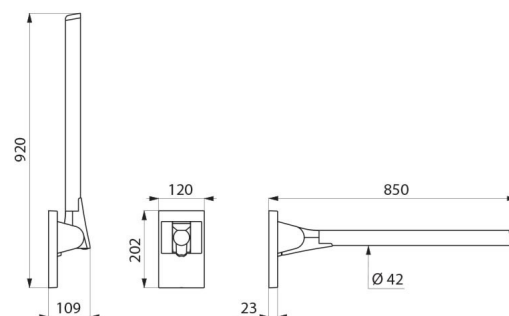
Removable: easy to unclip



Comfort: ergonomic flat face prevents rotation



Tested to over 200kg



# Be-Line drop-down support rail, L. 850mm, white

Ref. 511964W

Powder-coated matte white



## DESCRIPTION

**Be-Line drop-down support rail, L. 850mm, white - Ref. 511964W**

Be-Line® drop-down support rail for people with reduced mobility. In the lowered position use as a grab bar, as a support for standing and for assisting movement, for WCs or showers.

Allows side access in the raised position.

Removable: easy to remove with anti-theft locking system. Reduces the number of grab bars in a facility, allowing installation only when required.

Example: hotels or hospitals providing short-term accommodation for disabled people.

Drop-down rail with slowed down descent. Retained in upright position.

Aluminium tube.

Rounded profile Ø 42mm with ergonomic flat front face that prevents rotation for an optimal grip.

Matte white powder-coated aluminium finish provides a good visual contrast with dark walls.

Uniform surface for easy maintenance and hygiene.

Concealed fixings secured to wall by a 304 stainless steel plate, 5mm thick.

Supplied with stainless steel screws Ø 8 x 70mm for concrete walls.

Dimensions: 850 x 210 x 120mm.

Tested to over 200kg. Maximum recommended user weight: 135kg.

Support rail for WCs with 10-year warranty.

CE marked.

## ADVANTAGES



Innovative design suitable for all users



Removable: easy to unclip






Comfort: ergonomic flat face prevents rotation

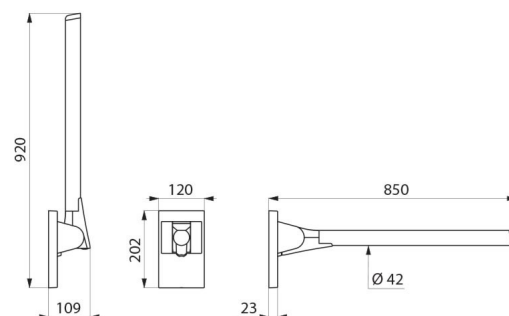


Tested to over 200kg

## TECHNICAL CHARACTERISTICS

**Be-Line drop-down support rail, L. 850mm, white - Ref. 511964W**

Height	210mm, 920mm when raised
Length	850mm
Width	120mm
Diameter	Ø 42mm
Finish	Powder-coated matte white aluminium
Norms	 
Warranty	





# Be-Line® comfort backrest for WCs

Ref. 511928C

Metallised anthracite powder-coated aluminium structure



## DESCRIPTION

Be-Line® comfort backrest for WCs - Ref. 511928C

Be-Line® comfort backrest for WCs for people with reduced mobility.  
Metallised anthracite powder-coated aluminium structure.

Flexible polyurethane backrest for toilets.

Dimensions: 150 x 583 x 173mm.

10-year warranty.

CE marked.

## ADVANTAGES






Comfort: flexible backrest

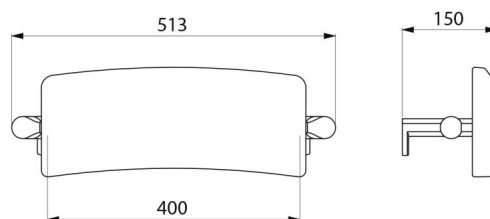


Prevents the user falling backwards

## TECHNICAL CHARACTERISTICS

Be-Line® comfort backrest for WCs - Ref. 511928C

Height	173mm
Depth	150mm
Width	583mm
Finish	Metallised anthracite powder-coated aluminium structure
Norms	 
Warranty	





## Be-Line® comfort backrest for WCs

Ref. 511928W

Matte white powder-coated aluminium structure



### DESCRIPTION

Be-Line® comfort backrest for WCs - Ref. 511928W

Be-Line® comfort backrest for WCs for people with reduced mobility.

Matte white powder-coated aluminium structure.

Flexible polyurethane backrest for toilets.

Dimensions: 150 x 583 x 173mm.

10-year warranty.

CE marked.

### ADVANTAGES




Comfort: flexible backrest



Prevents the user falling backwards

### TECHNICAL CHARACTERISTICS

Be-Line® comfort backrest for WCs - Ref. 511928W

Height	173mm
Depth	150mm
Width	583mm
Finish	Matte white powder-coated aluminium structure
Norms	CE 
Warranty	

