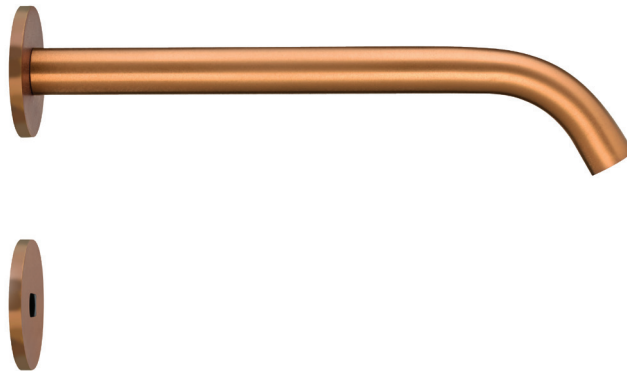


Intelligent

**The trusted independent experts for hand dryers
and washrooms since 2012.**



- | | | |
|---------|-------------------------------|---|
| TSL-882 | IR Sensor Tap - Mains power | The TSL-882 and TSL-885 IR Sensor Tap features a sleek wall mounted spout with accompanying sensor housing and is available in a range of finishes. |
| TSL-885 | IR Sensor Tap - Battery power | |



CODES

MAINS POWER	BATTERY POWER	FINISHES	LIGHT REFLECTANCE VALUE
TSL-882CS	TSL-885CS	Brushed Stainless Steel	58
TSL-882CP	TSL-885CP	Brushed Copper	19
TSL-882BK	TSL-885BK	Brushed Black	3
TSL-882BR	TSL-885BR	Brushed Brass	40
TSL-882BZ	TSL-885BZ	Brushed Bronze	17

TECHNICAL DATA MECHANICAL

Body Material	AISI 304 Stainless Steel
Coating Type	PVD
Aerator	Cascade
Water Pressure (Dynamic)	0.5 to 7.5 Bar [0.05 to 0.75MPa]
Water Temperature (max)	60°C
Flow Rates	0.5gpm [1.9L/min]
Also available:	0.35gpm [1.3L/min] – refer to Spare Parts & Accessories
	1.00gpm [3.8L/min] – refer to Spare Parts & Accessories

TECHNICAL DATA ELECTRICAL

Power supply	TSL-882 110-230 Vac, 50-60Hz, 1.5A TSL-885 6 V CR-P2 Lithium battery
Output (max)	6 Vdc, 1A
Power consumption	< 87% Active mode, 0.3W No load
Solenoid valve type	6V Latching
Water Ingress	IP55
Cable lengths	800mm – Power supply connection 800mm – Solenoid valve connection

TECHNICAL DATA SENSOR FUNCTION

Sensor type	Infrared
Pre-set sensor range	220mm
Sensor range (max)	250mm
Comfort delay	2 sec
Security time-out	30 sec
Operating Temperature	0 to 50°C
Response Time (max)	0.3 – < 1 sec

INSTALLATION GUIDELINES

Wall Cut-out Hole Size	<p>Ø16mm (Spigot)</p> <p>Ø40mm (Sensor Housing)</p>
Depth of Wall Cavity (min)	100mm
Wall Thickness (max)	50mm (incl. finishes)
Plumbing Connection	½" BSP (female) brass fitting is required to connect to the solenoid valve housing
Power supply cable	To be hard wired in to fused connection unit (FCU) or spur
Water supply	<p>1.0 Bar is the recommended minimum pressure for the taps to operate effectively.</p> <p>7.5 Bar is the maximum pressure for commissioning and is NOT recommended for general use.</p> <p>Gravity-fed systems may require a booster pump to achieve the optimal operating pressure</p> <p>All pipework must be thoroughly cleaned and clear of any debris before connecting the tap.</p>
Washroom layout	<p>Solenoid valve must be accessible for installation, commissioning and ongoing maintenance.</p> <p>Avoid installing the sensor tap directly opposite other sensor taps, soap dispensers, infrared devices or reflective surfaces.</p> <p>Careful consideration should be made when choosing the positioning of lighting and other reflective surfaces which may affect sensor performance.</p>

COMPLIANCE

BREEAM, LEED

WRAS

EMC compliance

Certificate No 1809302

Electromagnetic compatibility directive 2004/108/CE,
and Low Voltage 2006/95/CR

RELATED DOCUMENTS

Warranty

2 years parts & labour.

ACCESSORIES

PART NUMBER

DESCRIPTION

L260051

CACHE-TT AERATOR PCA SPRAY 0.35GPM

L260052

CACHE-TT AERATOR PCA LAMINAR 1.0GPM

L260053

STRAIGHT ADAPTOR (1/2" BSP FEMALE x 1/2" NPT MALE)

L230099

SENSOR WIRED CONTROLLER

L120020

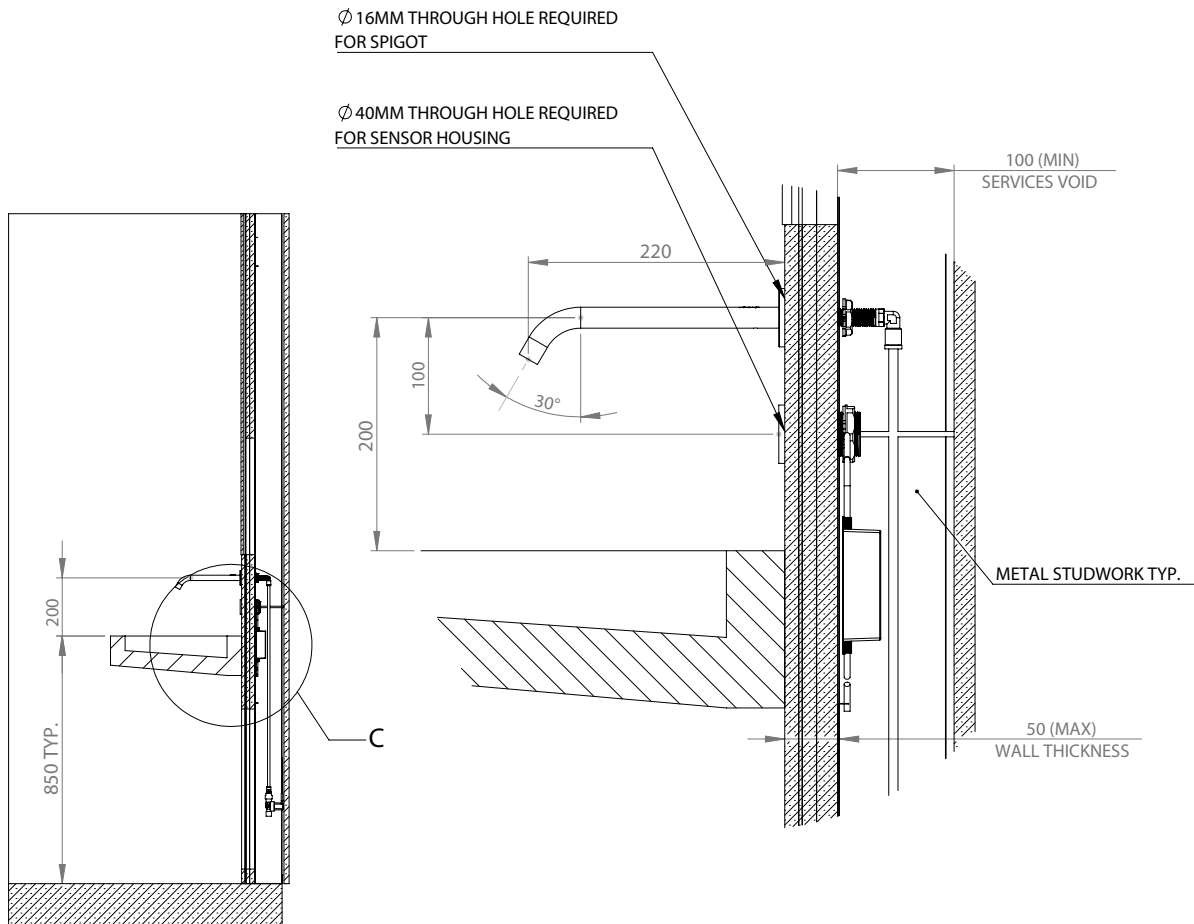
DAISY CHAIN ENCLOSURE

L120021

DAISY CHAIN CONNECTOR CABLE

SIDE

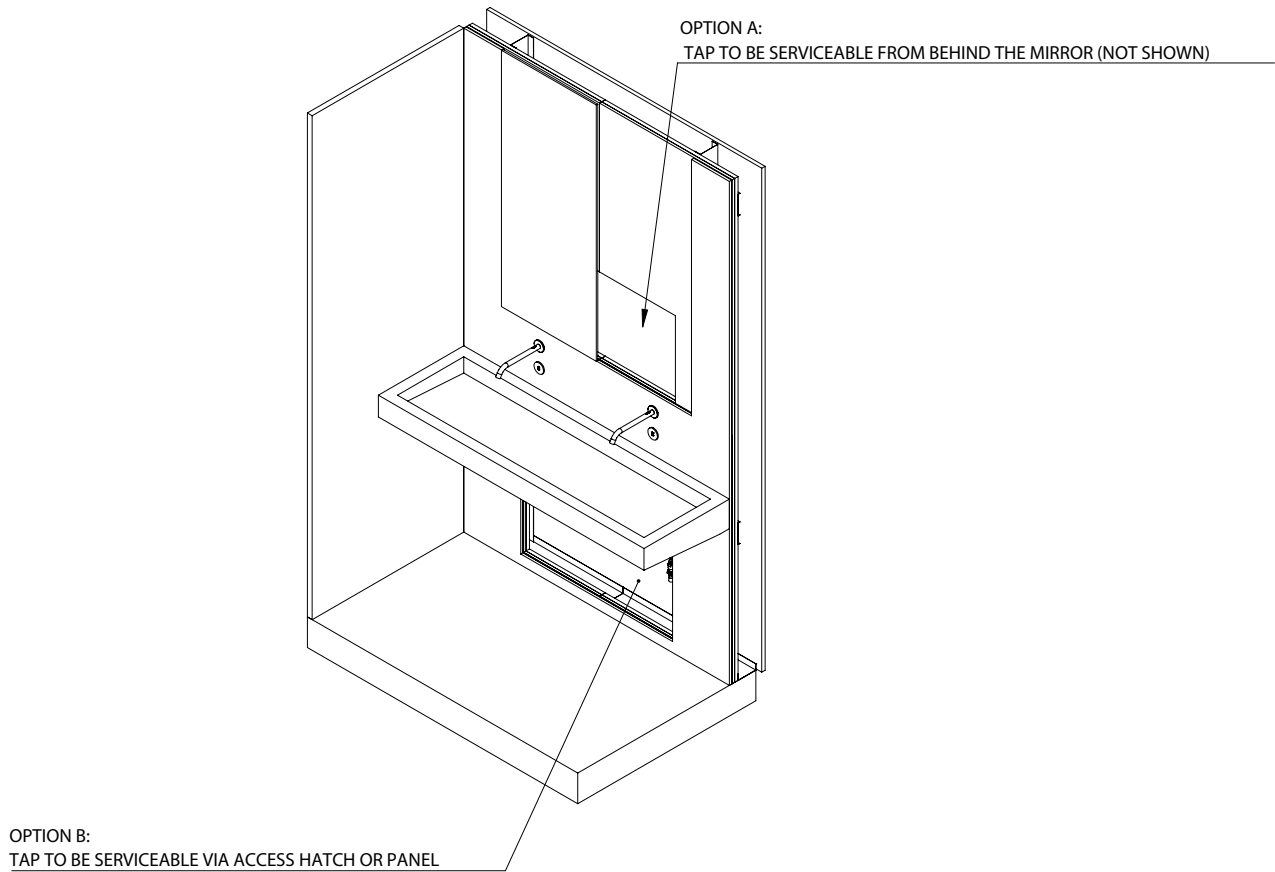
DETAIL



TECHNICAL DRAWING

VIEW

ACCESSIBILITY REQUIREMENTS



TECHNICAL DRAWING

