



INTELLIGENT FACILITY SOLUTIONS

Electric Works, 3 Concourse Way, Sheffield, S1 2BJ

United Kingdom: +44 (0) 114 354 0047

Eire: +353 190 36387

sales@ihdryers.co.uk

www.intelligenthanddryers.com

Cleanflow 650ML Automatic Stainless Steel
Liquid Soap Dispenser
IFS61S

User Manual



Cleanflow

- Thank you for purchasing our automatic soap dispenser
- Please read these instructions carefully before installation and retain for future reference

INTELLIGENT FACILITY SOLUTIONS
Electric Works, 3 Concourse Way, Sheffield, S1 2BJ
United Kingdom: +44 (0) 114 354 0047 | Eire: +353 190 36387
sales@ihdryers.co.uk | www.intelligenthanddryers.com

Features

Hygienic:

Automatic, touch free operation, preventing cross contamination and bacteria transfer

Material:

304 stainless steel cover

Design:

Lockable upper lid to prevent misuse. Waterproof construction protecting electronic components

Installation:

Suitable for public places such as hotels, schools, hospitals etc.

Adjustable Sensor Distance:

Sensor can be adjusted between 5-15cm

Adjustable Soap Volume per Sensor Activation:

Amount of soap dispensed per activation can be adjusted to be between 0.8ml and 6.5ml

Specification

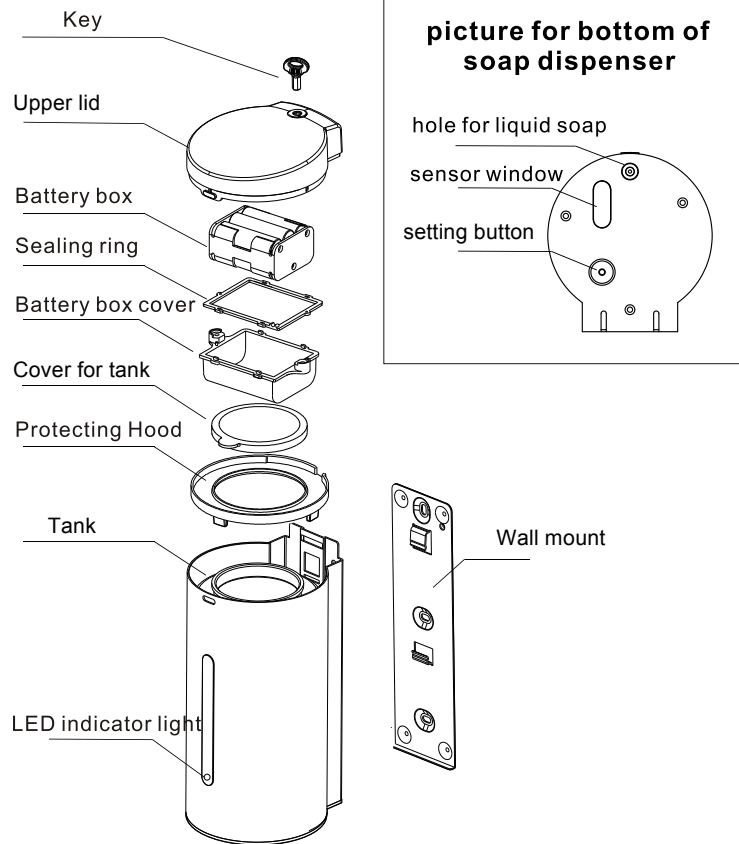
Model	IFS61S
Power	DC9V(AAX6PCS)
Tank capacity	650ml
Soap per sensor activation	0.8ml~6.5ml(adjustable)
Environment temperature	0~45℃
Sensor distance	5~15cm

Caution before installation

To make sure this product maintains a high performance and long life, please take note of the following:

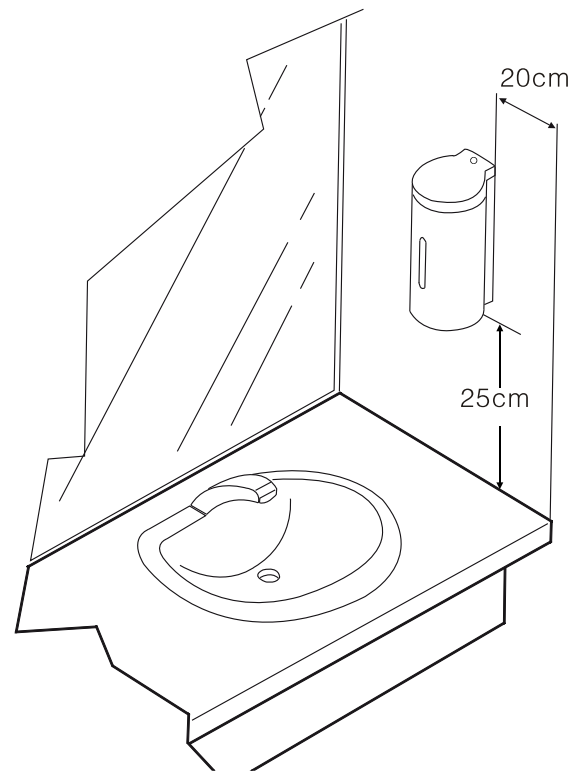
1. Please read this user manual carefully before you attempt to install the dispenser.
2. Replace all batteries at the same time. Do not mix old and new ones.
3. Make sure you are installing the dispenser onto a smooth, clean wall
4. Make sure the distance from the bottom of the dispenser to any reflective object or surface is more than 25cm
5. Ensure the user manual is available to all servicing staff after installation
6. Make sure the sensor distance area is free from objects
7. Don't install the dispenser where it will be prone to direct sunlight

Spare parts



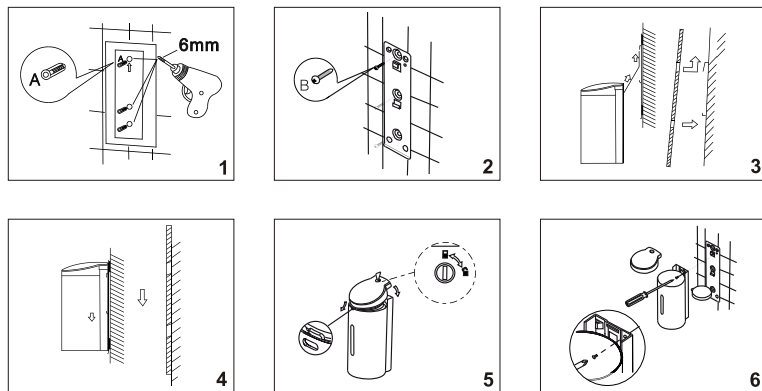
Installation drawing

Suggested distances



*** If the dispenser is to be installed above stainless steel objects, the distance from the sensor window to the object must be above 35cm**

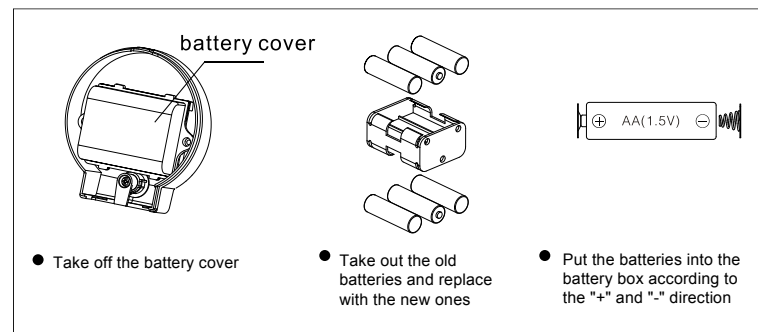
Installation manual



1. Position the paper mounting template in the correct location on the wall
2. Drill three 6mm holes in the wall, according to the paper mounting template, and insert a plastic wall plug into each hole
3. Correctly position the wall mount at the drilled holes and attach to the wall with provided screws.
4. Place the back of the dispenser against the wall mount and press into position so that the hooks firmly take hold
5. Open the upper lid using the supplied key
6. Locate the anti-theft screw and secure the dispenser to the wall mount

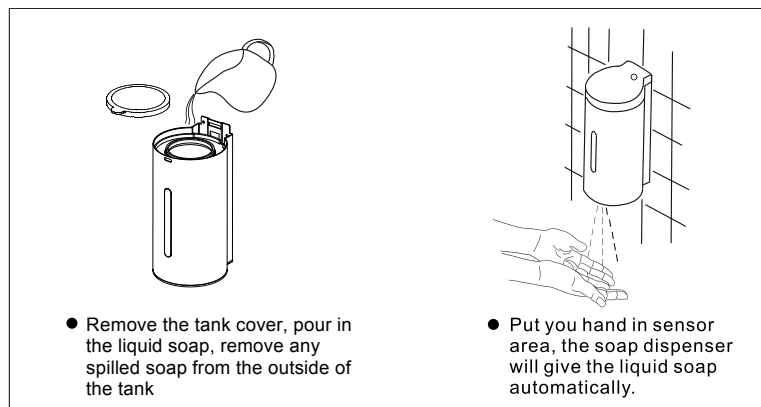
Battery change

1. The LED indicator light will flash continuously when the batteries need replacing
2. Ensure you change the batteries at this point before they fully run out
3. Use 6 x AA alkaline batteries making sure all batteries are replaced at the same time.
 - a) Open the upper lid of the dispenser using the supplied key
 - b) Remove the battery box from the battery box cover
 - c) Remove the old batteries and replace with the new ones, making sure they are inserted in the correct direction
 - d) Relocate the battery box into the battery cover and then close the upper lid, locking it for extra security



Usage instruction

1. Open the upper lid using the supplied key
2. Insert 6 x AA alkaline batteries as per the section of this manual "battery change"
3. Remove the tank cover and fill the tank with the required amount of liquid soap. Make sure any spillages are removed from the outside of the tank
4. Replace the tank cover, ensure the battery box is in its correct place and close the upper lid, locking it with the supplied key
5. To activate, place your hand under the sensor window. When the sensor receives the signal the LED indicator light will flash and the soap will be dispensed automatically.
6. Please note – when first used after a soap refill, you may need to activate the sensor a few times to pass the soap through the system from the tank.



Note:

Please remove the protective cover on the sensor window before using

Adjustment

When the batteries are first installed, the LED indicator light will flash for 5 seconds (approx. 1s/flash). After this, the dispenser is now in "setting mode". If there is no activation of the sensor window whilst in "setting mode" within 30 seconds, the "setting mode" will be locked and factory settings will be used.

To get back into "setting mode", press and hold the setting button on the bottom of the dispenser for 15 seconds. The LED indicator light will flash for 5 seconds (approx. 1s/flash). After this, the dispenser is now in "setting mode" for 30 seconds.

1. Adjustment of Sensor Distance

Whilst in "setting mode", press and hold the setting button on the bottom of the dispenser for 5 seconds. The LED indicator light will start flashing. Place your hand under the sensor window at the distance where you require activation to be until the LED indicator light switches off (please note this distance should be between 5-15cm from the sensor window). The sensor adjustment is now complete.

2. Adjustment of Soap Volume per Sensor Activation

Whilst in "setting mode", press the setting button on the bottom of the dispenser twice (on the first press the LED indicator light comes on, after the second press the LED indicator light will start to flash). Whilst the LED indicator light is flashing put your hand under the sensor window. The dispenser will give out liquid in 0.8ml shots (for a maximum of 8 times) until you remove your hand from the sensor window. Once the hand is removed the dispenser is set. Depending upon when you remove your hand from the sensor window you can set the amount of soap per sensor activation to be between 0.8ml and ~ 6.5ml.

Troubleshooting

Problem	Diagnosis	Remedy
LED indicator light not working	sensor problem	change the sensor
	power is low	check the electronics or batteries
	sensor distance is too short	adjust the sensor distance again
	the cable or battery doesn't connect well	recheck the cable or change batteries
	sensor window is not clean	cleaning sensor window
No soap output	sensor is induced continuously	remove possible obstruction from sensor
	long sensor distance	adjust the sensor distance again
	Soap dispenser is broken	call local dealer
Not enough soap per sensor activation	lower volume setting selected	adjust volume of soap per activation
	liquid is too thick	use a liquid with lower viscosity
	a blockage inside the tank and valve	regular cleaning of the tank and valve

Caution

1. To avoid damage and low performance, please do not excessively knock the dispenser as it has been installed with precision electronic components.
2. To avoid damage or corrosion to the products surface or inner electrical components please only use a soft damp cloth and neutral detergent to clean the dispenser. Do not use excessive amounts of water. Once cleaned, make sure the dispenser is fully dried with a dry soft cloth. Do not use products with a hydrochloric acid base, chlorinated bleaches, developing solutions, other strong acids, concentrated disinfectants and strong alkalis, such as caustic soda. Do not use rough cloths, scouring pads or nylon brush etc.