



## INTELLIGENT FACILITY SOLUTIONS

Electric Works, 3 Concourse Way, Sheffield, S1 2BJ

United Kingdom Phone UK: +44 (0) 114 354 0047

Phone Eire: +353 190 36387

[sales@ihdryers.co.uk](mailto:sales@ihdryers.co.uk)

[www.intelligenthanddryers.com](http://www.intelligenthanddryers.com)



The hand dryer **MUST** be isolated from the power supply during installation or maintenance.

- **When cleaning the stainless steel hand dryer fascia**, check for dirt and grease and wipe clean as directed in the 'Care of finishes' section.
- **Remove** dust, fluff and any other build up of foreign matter from the inlet and outlet grille areas (Fig.7).
- **Clean and check** the sensor area is clear of obstruction, removing any obstructing matter if required.

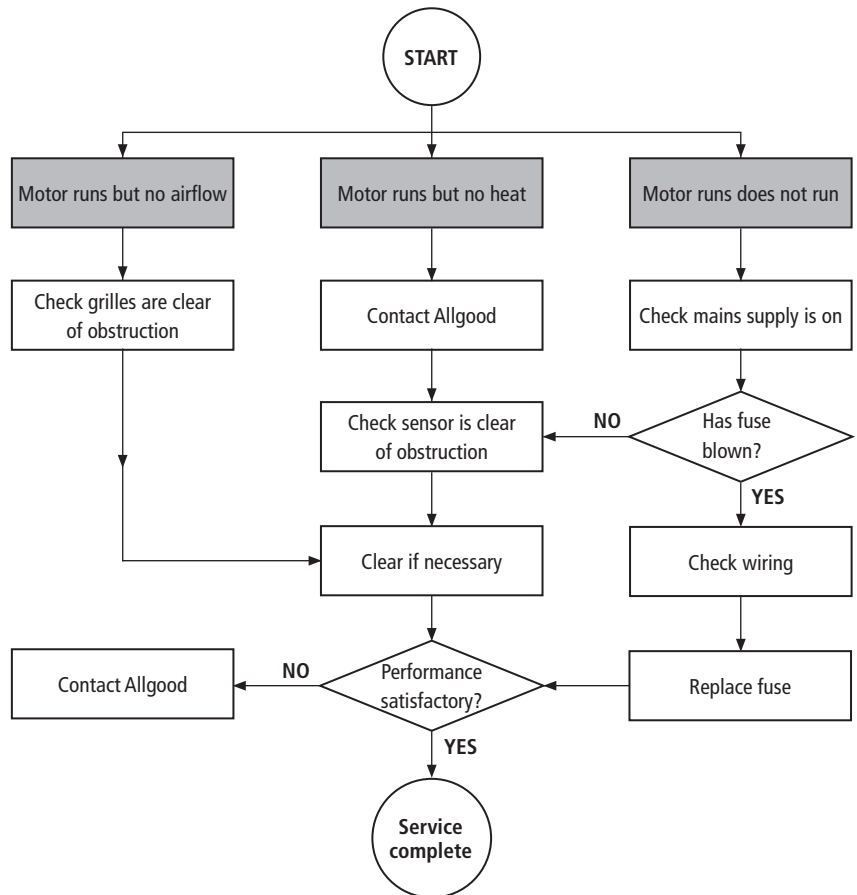
weekly checks

- **If there is movement in the hand dryer unit on the wall** check that the fixings are tight. If the hand dryer becomes loose, please tighten the relevant fixings (Fig.8).
- If after completion of the above checks the Modric surface mounted hand dryer is not working satisfactory, please contact **Allgood** on **020 7387 9951**

monthly checks



The hand dryer **MUST** be isolated from the power supply during installation or maintenance.





#### Satin Stainless Steel

Wipe clean with a medium strength detergent or white spirit using a soft cloth or sponge. Rinse and dry with a dry soft cloth. In the event of dirt having accumulated through neglect, application of aerosol lubricant prior to standard cleaning is recommended. A harsh brush should never be used.

**Finish prefixes: SS**

#### Polished Stainless Steel

Wipe clean with a medium strength detergent or white spirit using a soft cloth or sponge. Rinse and dry with a dry soft cloth. In the event of dirt having accumulated through neglect, application of aerosol lubricant prior to standard cleaning is recommended. A harsh brush should never be used.

**Finish prefixes: PS**